

OFFICE LOCATIONS

Jackson Office

1307 College Avenue
P.O. Box 398
Jackson, AL 36545
251-246-9081

Chatom Office

P.O. Box 453
Chatom, AL 36518
251-847-2302

Toll Free Number

1-800-323-9081

Office Hours

7 a.m. to 4 p.m.
Monday-Friday
(Drive-thru Hours)

www.cwemc.com

Payment Methods

Payments can be made at our Chatom and Jackson offices with cash, checks, debit or credit cards

Our Customer Service Representatives can accept payments over the phone using a credit card or debit card

Local Pages Editor

Anna Wright



The Virtues of Ben Franklin

Recently I enjoyed reading an article by a Georgia co-op manager. The article was about the virtues of Benjamin Franklin, who is most widely known for signing the Declaration of Independence.

He also had many other accomplishments as a printer, inventor, a statesman, and even founded America's first cooperative.

The cooperative was organized as the Philadelphia Contributionship for the Insurance of Houses from the Loss by Fire. This is the oldest fire insurance company and operating cooperative in the nation.

In forming this cooperative Franklin said, "Every man might help another, without any disservice to himself."

On a personal note Franklin seemed to make being a moral person top priority and made a list of virtues that ranked in order of priority to him.

- **Temperance** – Eat and drink in moderation.
- **Silence** – Don't speak of trivial things, and select your words carefully so as not to offend others.
- **Order** – Everything should have a place and be in its place. A cluttered desk represents a cluttered mind—a thing to be avoided.
- **Resolution** – Perform what you ought, and do it without fail.
- **Frugality** – Waste nothing,

and make your modest purchases count for the good of others or yourself.

- **Industry** – Work hard at what you do best. Be careful and waste none of your valuable time on this earth.
- **Justice** – Do or say nothing to injure another, nor fail to do those things that are your duty to others.
- **Tranquility** – Don't let small things upset you, particularly those things that are common or unavoidable.

- **Humility** – Imitate Jesus and Socrates.

Throughout his life he worked to master each of these virtues to make himself a better person. He thought that if he could make each one a habit, it would make the next virtue easier to master.

Franklin seemed to make being a moral person top priority and made a list of virtues that rank in order of priority to him.

In the article I couldn't help but smile at what was said in regard to Franklin's humility. It seems he was quoted as saying that if he could overcome pride he would probably be proud of his humility.

Thank you.

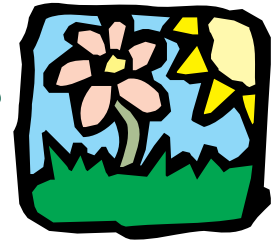


Stan Wilson

CEO/Manager of
Clarke-Washington Electric
Membership
Corporation

Spring Forward March 8th

2009 Planting Guide



Vegetable	Days to Maturity	Cultivars	Spring Planting Dates	Fall Planting Dates	Seeds or Plants (100 feet)	Spacing Rows/Plants (inches)
Beans						
Bush Snap	50-60	Contender, Green Crop, Derby	April	Aug. 5-20	.075 lb	36/2-3
Pole Snap	60-75	Dade, Kentucky Wonder, Kentucky Blue	Apr. 10-30	July 20-Aug. 5	.5 lb	36/6-8
Lima	65-75	Fordhook 242, Baby Fordhook, Henderson	Apr. 10-May 10	July 20-Aug. 5	.075 lb	36/3-6
Pole Lima	80-85	Carolina Sieva, Florida Speckled, King of the Garden	Apr. 15-May 15	July 15-Aug. 1	.5 lb	36/6-8
Cabbage	60-85	Bravo, Charleston Wakefield, Round Dutch, Stonehead Savoy Cabbage: Ace	Jan. 1-Feb.15*	July 25-Aug. 10	.5 oz	36/12
Collards	60-80	Champion, Georgia Southern, Vates, Top Bunch	None	July 1-Sept. 15	.5 oz	36/12-18
Corn						
Sweet	65-90	Silver Queen, Golden Queen, Seneca Chief, How Sweet It Is, Merit, Snow Belle	Mar. 15-June 1	None	.25 lb	36/12-18
Cucumbers	50-65	Pickling: Calypso, Explorer; Slicing: Dasher II, Fanfare, Salad Bush, General Lee	Apr. 15-May 15	July 1-20	1 oz	60/24
Eggplant	65-85	Black Beauty, Black Belle, Classic, Ghost Buster, Ichiban	Apr. 15-May 15*	July 1-20*	50 plants	36/24
Mustard	40-50	Florida Broadleaf, Giant Southern Curled, Red Giant	Feb. 1-Mar. 15	Aug. 15-Sept. 5	.5 oz	20/2
Okra	50-65	Clemson Spineless, Emerald, Lee, Burgundy	Apr. 10-June 30	None	1 oz	36/12
Onions						
Bulb	100-120	Fresh Bulb: Granex 33, Grano 502, Grano 1015; Long-Storing Bulb: Yellow, White, Red	Jan. 15-Mar. 15*	Sept. 15-Oct. 15	.5 oz	30/2-4
Green	40-55	Multiplying: Evergreen	None	Oct. - Feb.	1 qt.	30/2-4
Peas						
Southern	60-70	Pinkeye Purple Hull, Mississippi Purple, Mississippi Silver, Freeze Green	Apr. - July	None	.5 lb	42/4-6
Peppers	65-85	Hot: Cayenne, Super Chili, Habanera, Hungarian Wax, Jalapeno; Sweet: Sweet Banana, Gypsy, Keystone Resistant Giant, Golden Summer, Chocolate Beauty, Purple Beauty, King Arthur, Bell King	Apr. 1-May 10*	July*	50 plants	35/24
Potatoes						
Irish	70-90	Red LaSoda, Red Pontiac, Sebago, Superior	February	Aug. 1-15	12 lbs	36/12
Sweet	90-120	Beauregard, Georgia Red, Red Jewel	Apr. 15-June 15	None	100 plants	36/12
Radishes	25-30	Cherry Belle, Scarlet Globe, White Icicle	Feb. 1-Apr. 1	Sept. 1-Oct. 15	.5 oz	24/1
Rutabagas	90-120	American Purple Top	None	July	.5 oz	36/6-12
Squash						
Summer	40-55	Dixie, Yellow Crookneck, Yellow Straightneck, Cocozelle, Freedom III, Lemondrop (straightneck), Prelude III (crookneck), Sundrops, Tivoli; Zucchini: Elite	April	Aug. 1-15	1 oz	36/15
Winter	85-100	Acorn, Cream of the Crop, Butternut, Vegetable Spaghetti	April	July 15-Aug. 1	.5 oz	60/36
Tomatoes	70-90	Atkinson, Better Boy, Big Beef, Celebrity, Husky Gold, Monte Carlo, Small Fry; Cherries: Sweet Chelsea	April*	July*	35-50 plants	60/24-36
Turnips	40-60	Purpletop, Shogoin; Roots: Just Right	Feb. 1-Apr. 1	Aug. 10-Oct. 1	.25 oz	30/2
Watermelon	80-90	Bush, Sugar Baby, Charleston Gray, Crimson Sweet; Yellow: AU Golden Producer	April	June 15-30	.5 oz	96/96

*Transplant.

Days to maturity are from planting seed or setting transplants. The number of days will vary.

Cultivars listed in this chart represent a few of those recommended for Alabama. There are many other good cultivars that are worthy of trial in the home garden.

CWEMC aids Kentucky Co-ops after Ice Storm

Clarke-Washington EMC sent a line crew to aid Kentucky cooperatives with restoring power outages caused by 36 hours of rain, snow and ice the state received beginning Jan. 26.

The crew left Monday, Feb. 2, heading to Kenergy, a distribution cooperative in Henderson, Ky. Representing Clarke-Washington EMC are: Jason Pipkin, Dwight Pugh, Lester Brown and Charles Brooks.

The storm knocked power lines down leaving more than 525,000 electric customers without power across the state. According to newspaper reports, this was the second-worst power outage in Kentucky's history, surpassed only by the high winds from Hurricane Ike that blew through in September 2008, knocking out power to 600,000 residents.

Kenergy, the Henderson, Ky., distribution cooperative, has 54,094 members with 6,700 miles of line in 14 counties. The ice storm knocked out power to 34,000 of Kenergy's members with 2,500 power poles being knocked down.

There are more than 600 electric cooperatives from more than 10 states aiding with this crisis. Over 165 employees of Alabama's 22 cooperatives are on line crews working in Kentucky.

Clarke-Washington EMC is apart of a nationwide-network of co-ops that are organized to help each other out in times of need. In 2004 and 2005, Clarke-Washington EMC received help following hurricanes from numerous electric cooperatives and hundreds of lineman.

Although this is the first line crew to assist in an emergency in 2009, Clarke-Washington EMC has sent two other crews to help co-ops in Louisiana in similar situations during the past six months.

All Clarke-Washington EMC's cost, including pay roll and equipment, is covered by the cooperative which requests help.

Clarke-Washington EMC is a Touchstone Energy Electric Cooperative serving members in Clarke, Washington, Wilcox and Monroe counties for 73 years.



CWEMC sends a line crew to help Kenergy, an electric cooperative in Henderson, Ky., restore power to its members after January's ice storm. From left are: Jason Pipkin, Dwight Pugh, Lester Brown and Charles Brooks. Behind them is a map showing all the electric cooperatives in the nation.

SCHOLARSHIP OPPORTUNITY

FOR GRADUATING SENIORS!

Are you a high school senior who is graduating this spring? Are you a dependent of a member of our local cooperative?

If so, you are eligible to apply for a scholarship from the Electric Cooperative Foundation. Your local cooperative has joined other cooperatives throughout the state of Alabama to create this Electric Cooperative Foundations. This spring the foundation will be awarding scholarships across Alabama for students to continue their education at post-secondary and vocational schools.

For more details about this scholarship, obtain a copy of an Electric Cooperative scholarship application from your high school guidance counselor, print one off from our Web site at www.cwemc.com under Educational Programs or call:

**Anna Wright
Clarke-Washington
EMC
251.246.9081**

Don't wait; applications with all required attachments must be received no later than March 13, 2009.



CONGRESSIONAL DELEGATION

SENATORS



Senator Hank Sanders

- Democrat
- District 23
- Serving counties of Clarke, Conecuh, Dallas, Perry, Lowndes, Marengo, Monroe & Wilcox
- P.O. Box 1305 Selma, AL 36702
- 334.875.9264



In Memory

Senator

W.H. "Pat" Lindsey

- 22nd District
- Baldwin, Choctaw, Clarke, Conecuh, Escambia, Mobile, Monroe & Washington counties.

REPRESENTATIVES



Rep. Marc Keahey

- Democrat
- District 65
- Serves counties of Clarke, Washington & Choctaw
- P.O. Box 934 Grove Hill, AL 36451
- 251.275.3127



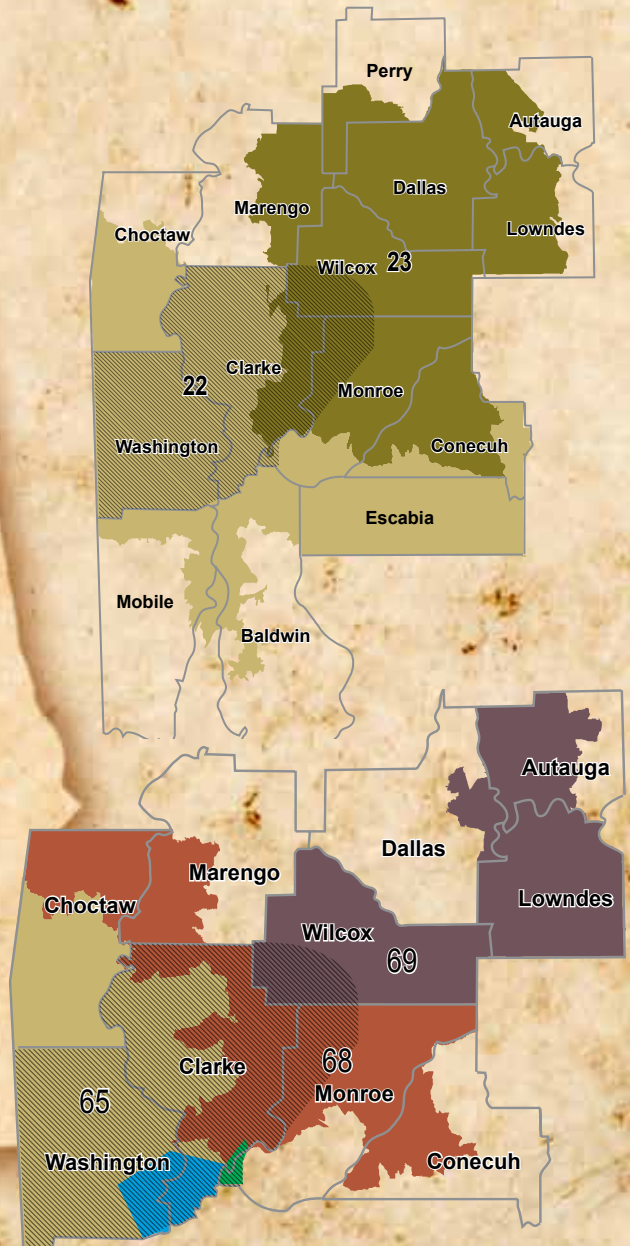
Rep. Thomas Jackson

- Democrat
- District 68
- Serves counties of Choctaw, Marengo, Clarke, Monroe & Conecuh
- P.O. Box 656 Thomasville, AL 36784
- 334.636.0094



Rep. James L. Thomas

- Democrat
- District 69
- Serves counties of Lowndes, Wilcox, Dallas & Autauga
- P.O. Box 1089 Camden, AL 36726
- 334.682.9590



Pay Bills Online **NOW FREE!**



Online Bill Pay Benefits:

- ▶ No more writing checks to pay monthly bills
- ▶ Pay your bills anytime, anywhere
- ▶ Never buy stamps again
- ▶ Schedule recurring or one-time payments
- ▶ Never miss a payment
- ▶ All Free with any checking account

First United Security Bank
Member FDIC
WE'RE ALL ABOUT YOU

www.firstusbank.com

Sign up at a branch near you!

 Equal Housing Lender **FDIC**

Area Relay for Life Dates

Relay for Life is the American Cancer Society's signature activity. It offers everyone in a community an opportunity to participate in the fight against cancer.

Teams form at businesses, schools, churches, civic leagues, and with family members raise much-needed funds to fight cancer and raise awareness of cancer prevention and treatment.

Relay for Life is a life-changing event that brings together people within the community to:

- Celebrate the lives of those who have battled cancer.
- Remember loved ones lost to the disease.
- Fight Back. We Relay because we have been touched by cancer and desperately want to put an end to the disease.

One in three people will be diagnosed with cancer during their lifetime. It is because of your involvement with Relay for Life that we are able to save lives, help those battling cancer, and empower all to fight back against the disease.

Wherever you live, please support your Relay for Life teams by helping to raise money to one day find a cure for all cancers.

- **GROVE HILL:**
Friday, April 3rd
- **THOMASVILLE:**
Friday, April 24th
- **WASHINGTON COUNTY:**
Friday, May 1st
- **JACKSON: Saturday,**
May 2nd



When buying recreational and timberland properties, Merchants Bank is there to help. We have extensive experience in financing these types of properties. Let us help make your dreams a reality.



JACKSON 1901 College Ave. P.O. BOX 347 Jackson, AL 36545 246-4425 ATM	JACKSON 101 College Ave. Jackson, AL 36545 246-4425	GROVE HILL 103 Main Street P.O. Box 517 Grove Hill, AL 35461 275-3175 ATM	THOMASVILLE 33140 Hwy 43 Thomasville, AL 36784 836-1501 ATM	MOBILE 877 Hillcrest Rd Mobile, AL 36696 251-380-0288
---	---	---	---	---

Toll Free 1-800-495-5111 • 24 HOUR ACCOUNT INFORMATION 246-1525 OR 1-800-999-9665
Member FDIC Visit Our Website at www.merchantsbk.com

