

OFFICE LOCATIONS

Jackson Office

1307 College Avenue
P.O. Box 398
Jackson, AL 36545
251-246-9081

Chatom Office

P.O. Box 453
Chatom, AL 36518
251-847-2302

Toll Free Number
1-800-323-9081

Office Hours

7 a.m. to 4 p.m.
Monday-Friday
(Drive-thru Hours)

Pay your bill online at
www.cwemc.com

Payment Methods

Payments can be made at our
Chatom and Jackson offices
with cash, checks, debit or
credit cards

Our Customer Service Rep-
resentatives can accept pay-
ments over the phone using a
credit card or debit card

Local Pages Editor
Anna Wright



Clarke-Washington EMC

*Invites you to our
Member Appreciation Day &*

ANNUAL MEETING

Tuesday, Sept. 9, 2008
**Jackson Fairgrounds behind
Jackson Steak House**

*Registration & Entertainment
from 5 p.m. to 7 p.m.
Reports begin at 7 p.m.*

Please watch your mailbox for
an Annual Meeting registration card.

2002 Dodge 1500 Truck



Grand Prize Giveaway

Grand Prize Giveaway

2002 Dodge 1500 Truck

Many other door prizes will be given away to our registered members at the Annual Meeting.

Please watch your mailbox for an Annual Meeting registration card.



Clarke-Washington EMC

Invites you to our Member Appreciation Day &

Annual Meeting

Tuesday, Sept. 9, 2008

Jackson Fairgrounds behind Jackson Steak House

Registration & Entertainment from 5 p.m. to 7 p.m.

Reports begin at 7 p.m.

Official Notice

To the Members of Clarke-Washington Electric Membership Corporation:

You are hereby notified that an Annual Meeting of the members of Clarke-Washington Electric Membership Corporation has been called by the Board of Trustees, to be held at 7 p.m. on Tuesday, Sept. 9, 2008 at the Jackson Fair Grounds.

The purposes for which this Annual Meeting has been called are as follows:

1. Election of trustees for district numbers 3, 6 & 9.
2. Transaction of any other business which may come before the meeting.

Ray Turner, Secretary
Clarke-Washington EMC

Watch your mailbox for an Annual Meeting registration card. Please bring it with you to the Annual Meeting, Tuesday, Sept. 9, 2008 Jackson Fair Grounds Registration starts at 5 p.m. and the meeting will begin at 7 p.m.

2002 Dodge 1500 Truck



Grand Prize Giveaway



Nominating Committee Report

August 5, 2008

Mr. Ray Turner
Secretary-Treasurer
Clarke-Washington EMC
Jackson, AL 36545

Dear Mr. Turner:

We, THE NOMINATING COMMITTEE for Clarke-Washington Electric Membership Corporation, selected by the board of trustees at their meeting held on July 17, 2008, hereby nominate:

District # 3 Jack A. Bailey, Wagarville, AL

District # 6 Davis Henson, Jr., Chatum, AL

District # 9 William Davis, Jr., Franklin, AL

NOMINATING COMMITTEE:

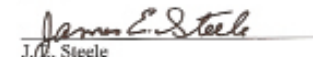

Bodie Carpenter


Margaret Colville


Jewel Dailey


James W. Fore, III


Theodore Law


J. Steele


Bill Toomey


Theodore Williams



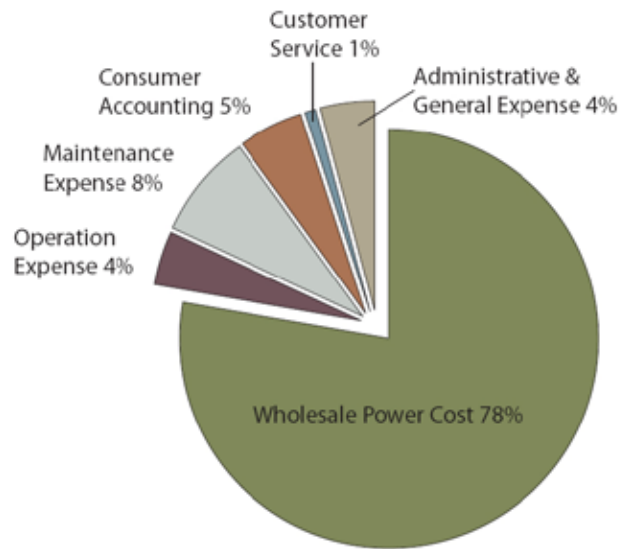
Wholesale Power Cost Rising

Effective Aug. 1, 2008 PowerSouth (formally AEC) raised wholesale rates to Clarke-Washington EMC by 8 mills per kwh (\$8 per 1,000 kwh). The increase is due to the rise in the cost of fuels (coal and natural gas) used to generate electricity. This increase will be passed on to customers through the wholesale power cost adjustment calculation on electric bills.

We have seen oil this summer at some \$150 a barrel which drove gasoline and diesel fuel prices to record highs. Coal and natural gas also tracked up with the oil and other commodity prices. As this is being written, oil prices and the price of natural gas have backed off. Maybe the price bubble has burst and fuel prices will trend back down which will help hold the price of electricity down.

However, it does look as if more wholesale increases are coming in early 2009. With the Aug. 1 increase wholesale power cost from PowerSouth will consume a hefty 78 percent (over 3/4) of the Clarke-Washington EMC electric revenue based on the operations and maintenance expenses of the 2008 annual budget.

Thank you for your continued support as escalating fuel costs has an impact on all of our budgets.



Aug. 1, 2008 PowerSouth raised wholesale rates to Clarke-Washington EMC by 8 mills per kwh (\$8 per 1,000 kwh). This increase will consume a hefty 78 percent (over 3/4) of the Clarke-Washington EMC electric revenue based on the operations and maintenance expenses of the 2008 annual budget.

Appliances with Standby Power can add up to 20 percent to monthly electric bills

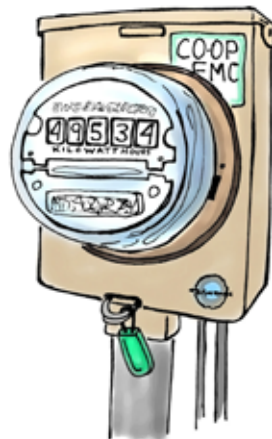
Appliances with standby power, use energy when they are turned off but are still plugged into an electrical outlet.

TVs, DVD players and stereos all use “standby” power after you shut them off because they need to stay energized to remain responsive to your remote control.

Your desktop computer also uses electricity when it’s “asleep.” Turn it off and unplug it when you’re not using it.

Each appliance wastes just a little bit of power in standby mode, but those kilowatt-hours add up over time. In fact, the Department of Energy reports that standby power can account for as much as 20 percent of home energy use.

- Unplug all of your electronics—including the pieces of your entertainment system—if you go away for the weekend.



- Unplug seldom-used electronics like a second TV or your old VCR until you want to use them.
- Plug your electronics into power strips. Connect the power strips to a light switch and turn it off when you leave the room.
- Power down desktop computers and laptops when you’re finished working. If you have a home office, the same goes for printers and fax machines.
- Choose new products that bear the Energy Star label. They typically use less standby power.
- Invest in an “intelligent” power strip for your computer equipment. It “knows” when you turn your computer off—and it turns off your monitor, printer and scanner at the same time, so you don’t have to remember. It turns them all back on when you power up the computer.

Illustrations by Donnaree Hardy

Maintenance continues throughout the summer

Our linemen work in the heat and humidity to keep power-lines and equipment in the best working order.

Staying on top of our maintenance jobs, is important for public safety and makes sure that our customers receive reliable electrical service.

Our employees work to satisfy the needs of our customers. We work to supply them with electricity at a good value.

Dwight Pugh, Charles Brooks, and Terry Hooper tie in a guy wire to an anchor.

Terry Hooper connects a guy wire and marker to an anchor.

