



## OFFICE LOCATIONS

### Jackson Office

1307 College Avenue  
P.O. Box 398  
Jackson, AL 36545  
251-246-9081

### Chatom Office

P. O. Box 453  
Chatom, AL 36518  
251-847-2302

### Toll Free Number

**1-800-323-9081**

### Office Hours

7 a.m. to 4 p.m.  
Monday-Friday  
(Drive-thru Hours)

### Pay Your Bill Online

[www.cwemc.com](http://www.cwemc.com)

### Payment Methods

Payments can be made at our  
Chatom and Jackson offices  
with cash, checks, debit or credit  
cards

Our Customer Service Repre-  
sentatives can accept payments  
over the phone using a credit  
card or debit card and by e-check

### Local Pages Editor

Anna Wright

# October is National Cooperative Month

Cooperatives are committed to the community.

We're owned by our members, and our mission is to serve them and the communities in which they live, work and shop.

October is National Co-op Month which celebrates the many ways people work together to create better businesses for their communities.

Cooperatives provide goods and services that may not otherwise be available, or at least, available at a reasonable price. In our case, cooperatives provide electricity, but 48,000 cooperatives all over the nation provide housing, childcare, healthcare, groceries, hardware, telecommunications and financial services.

When you get services from a cooperative, you are more than a customer — you are a member in that business.

Cooperatives are accountable to you, the members. This arrangement results in more competitive pricing, reliability and efficiency.

Profits (margins) are returned to our members and the money stays in the local economy.

Cooperatives are socially responsible organizations, dedicated to the well-being of your community. They provide programs to area schools, sponsor and participate in local charitable events, promote new commerce and support their local communities.

There are seven principles that guide cooperatives in a way of

doing business that elevates the customer to the level of owner and places the co-op at service to the local community.

### *The 7 Cooperative Principles:*

- 1. Voluntary and Open Membership**
- 2. Democratic Member Control**
- 3. Non-Profit and Return of Capital Credits**
- 4. Autonomy and Independence**
- 5. Education, Training, and Information**
- 6. Cooperation Among Cooperatives**
- 7. Concern for Community**

At Clarke-Washington EMC we are committed to our members and proud to be a cooperative.

Thank you.



**Stan Wilson**

Manager of  
Clarke-Washington  
Electric  
Membership  
Corporation



Your cooperative, along with thousands of others across the nation, is recognized during October of each year for its unique form of business. Although co-ops have been around for many years, a lot of people still do not understand how they operate.

**What are Cooperatives?** *Cooperatives are businesses that:*

- Are owned and controlled by their members — the people who use the co-op’s services or buy its goods — not investors.
- Return surplus revenues (income over expenses and investment) to members proportionate to their use of the cooperative, not proportionate to the ownership share.
- Are motivated by service to their members, not by profit.

**Types of Cooperatives?**

***Consumer-owned Co-ops***

Consumer cooperatives are owned by the people who buy the goods or use the services of the cooperative. Consumer co-ops include credit unions, childcare cooperatives, **electric** and telecommunications cooperatives, food co-ops, health care co-ops, housing cooperatives and many others.

***Producer-owned Cooperatives***

Producer-owned cooperatives are owned by producers of farm commodities or crafts that band together to process and/or market their products.

***Worker-owned Cooperatives***

Worker co-ops are owned and governed by their employees

***Purchasing Cooperatives***

Purchasing cooperatives are owned by small, independent businesses, municipalities or other like organizations that band together to enhance their purchasing power.



# Recycle CFL Bulbs at CWEMC

*CFL Bulbs contain mercury and must be disposed of properly. CWEMC now offers a way to safely recycle them.*

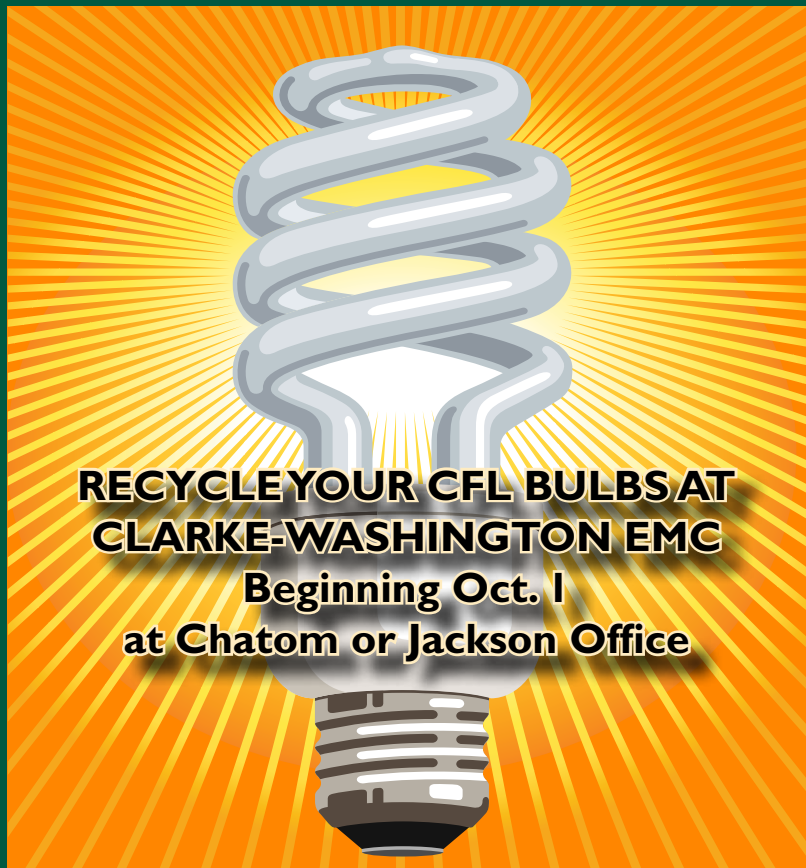
Replacing your old incandescent light bulbs with environmentally friendly, energy-efficient compact fluorescent lamps (CFLs) is one way you can conserve energy and save money. CFLs last up to 10 times longer than incandescents, consume as much as two-thirds less energy than incandescents, and cost less money in the long run. In fact, you can save up to \$30 in energy costs over the lifetime of each CFL you use instead of a traditional incandescent bulb.

CFLs can last up to 6,000 hours before burning out and put out much less heat than incandescent bulbs. While CFLs do cost more than incandescent light bulbs—from \$3 to \$15 per bulb compared with less than \$1 per incandescent bulb—CFLs use about two-thirds less energy.

The latest CFLs are much improved over those slow-to-turn-on, pale-white bulbs of the past. So why not try replacing some of your old bulbs with CFLs.

But did you know that CFLs cannot be thrown in the trash? CFLs contain a tiny amount of mercury, about the size of the tip end of a ball-point pen. That's much less than the amount contained in old thermometers that may still be in your medicine cabinet. But because they do contain mercury, CFLs must be disposed of properly.

To help the people and the communities it serves, CWEMC now offers a free CFL recycling program. Simply bring your burned-out or broken CFLs to the Jackson or Chatom offices of CWEMC and drop them off at the recycling station located in each office lobby, Monday - Friday, 7 a.m. till 4 p.m. Clarke-Washington EMC will handle the rest for you!



**RECYCLE YOUR CFL BULBS AT  
CLARKE-WASHINGTON EMC  
Beginning Oct. 1  
at Chatom or Jackson Office**

## CFL — The Energy Efficient Lightbulb

You wouldn't dream of turning on mini-space heaters in every room. But that's exactly what you're doing every time you flip on an incandescent light bulb.

Traditional light bulbs use energy to heat a tiny filament inside the bulb until it is white hot — hot enough to produce light. But that means an incandescent bulb uses about 90 percent of the energy it draws to create heat.

A compact fluorescent bulb (CFL), on the other hand, is designed to produce primarily light, not heat. That means it can produce the same amount of light using less electricity than an incandescent bulb.

If you tried CFLs a long time ago and didn't like the color or the delay when you flipped the light switch, it's time to try them again. The light and performance of the latest CFLs are much closer to what you're used to.

It's true that CFLs cost more than incandescents, but you'll more than make up the difference by paying lower electric bills.



## 27th Annual Cooperative Youth Conference

# Co-op Boot Camp

More than 30 students from across Alabama met at the 4-H Center in Columbiana to participate in the 27th Annual Cooperative Youth Conference, July 6-8. This year's theme was "Co-op Boot Camp."

Clarke-Washington EMC sponsored two students to attend camp: Sydney Thomas of Jackson High School and Cole Harrell of Jackson Academy. CWEMC asked students to write an essay on electric cooperatives and fill out an application to be selected to attend the conference.

Students heard from several professionals in the cooperative industry such as Grace Smith with the Alabama Farmers Cooperative and Dr. John Adrian, chair of the Auburn University Department of Agriculture Economics.

"A cooperative is a legally organized business of our free enterprise system," Dr. Adrian explained, "voluntarily owned and controlled by its member patrons who have a common interest..."

Hands-on group projects gave students an opportunity to experience cooperatives instead of just hear about them. Students were broken into four groups, and asked to create their own co-op. They were encouraged to describe their co-op's principles, structure, history and leadership. Students also developed a complete advertising campaign for their co-op though logos, magazine advertisements, and even jingles.

"I really enjoyed camp because not only do you learn a lot about who you are, but you also get the opportunity to make life long friends," Sydney Thomas said.

Dr. Marc Clark, a motivational speaker from Kentucky, inspired students to seize opportunities that come their way. He encouraged them to think

outside of the box, and illustrated the importance of working together to accomplish a goal.

"It was a great learning opportunity and I got to make a lot of new friends," Cole Harrell said.

Deborah Solie, advisor to the Ag Ambassadors at Auburn University, helped end this year's boot camp. She spoke on continuing education and explained the importance of college deadlines and financial aid services.

The Cooperative Youth Conference has been introducing the cooperative business model to Alabama's youth for 27 years. It is sponsored by the Alabama Council of Cooperatives.



Clarke-Washington EMC sponsored Sydney Thomas of Jackson High School and Cole Harrell of Jackson Academy to Cooperative Youth Camp in July.

**Pay  
Online  
and  
Save  
Time**

### Pay your bill online

Visit [www.cwemc.com](http://www.cwemc.com) and select the bill payment option button on the home page.

Follow the instructions on the online billing information page. Located on the bottom of the page is a "Customer Login" button. Click and you will be taken to the login page.

Type your account number minus the last two digits in the account number field. Your password is located on your electric bill, just under the total.

Call us if you need further assistance 800.323.9081

**Customer Service from your Electric Cooperative: A Powerful Connection**



## Your Local Co-op Branches Out


No, we don't do landscaping. But we perform constant preventive maintenance, such as keeping trees away from power lines. Our commitment is to provide cutting-edge efforts to maintain reliable service for you.

### **fact:**

Tree limbs contacting power lines are a major cause of electrical disruptions.



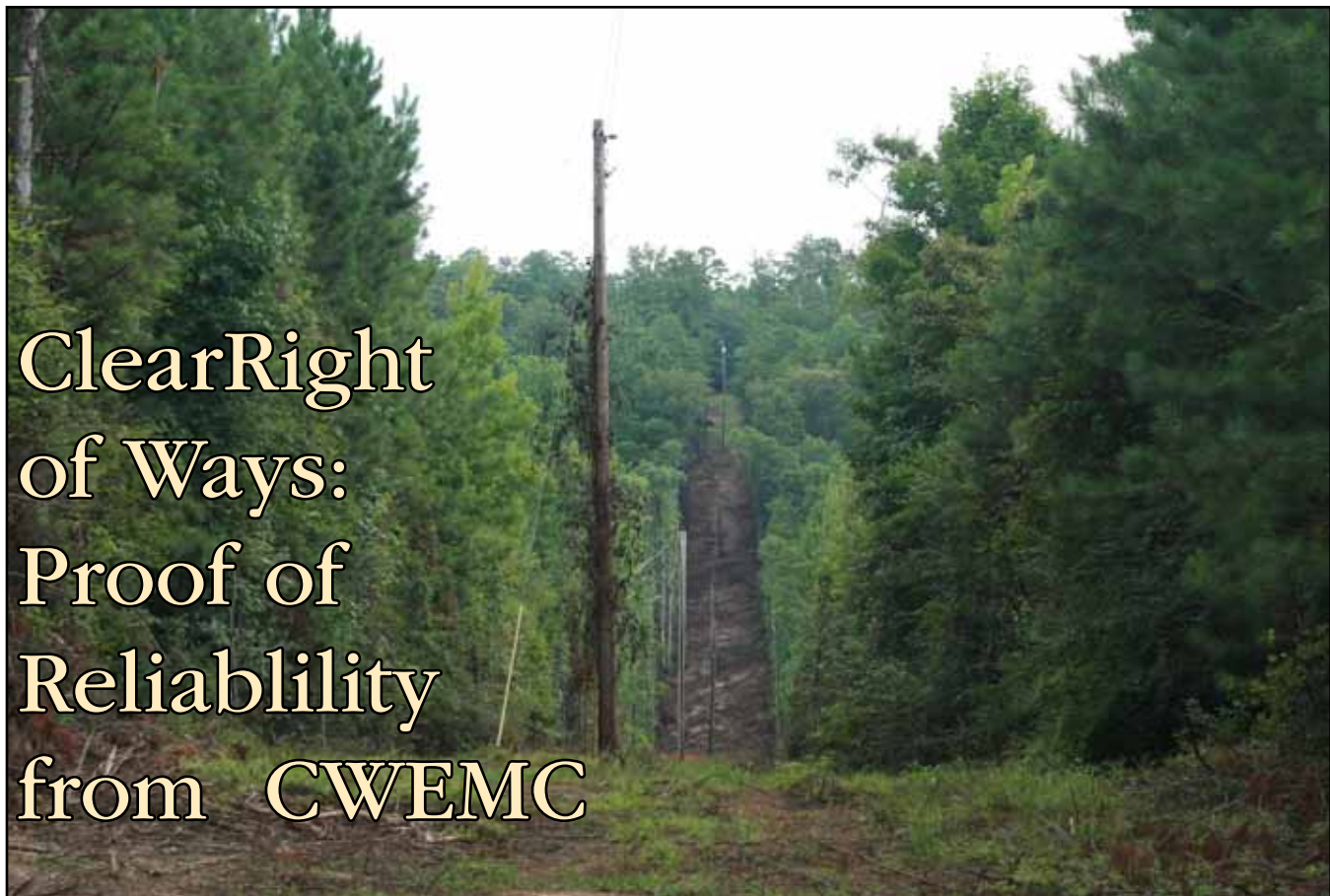
**Clarke-Washington Electric  
Membership Corporation**

A Touchstone Energy® Cooperative 

**800-323-9081**

Jackson & Chatom





ClearRight  
of Ways:  
Proof of  
Reliability  
from CWEMC